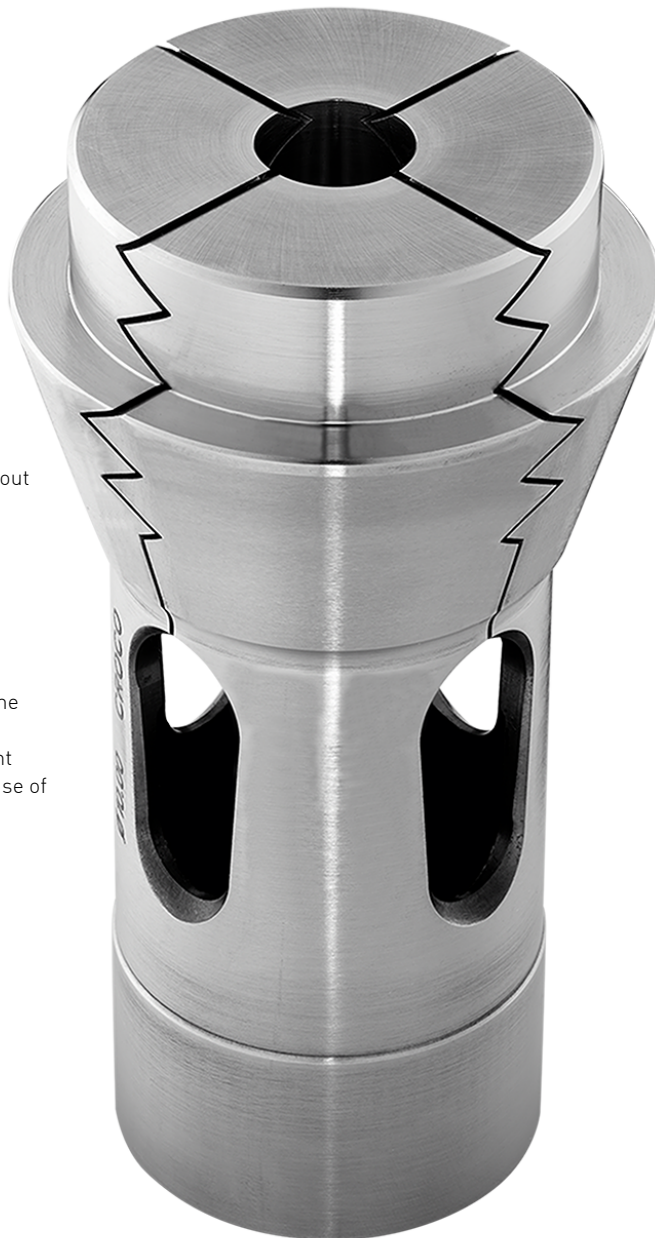


Wibemo - Croco collets

Steel Croco

A product of

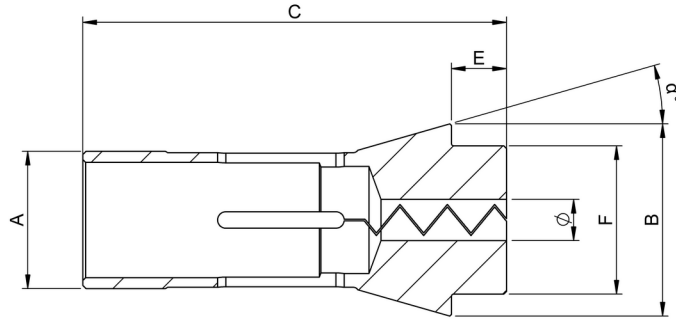


Advantages :

- Clamping range to 0.2 mm down
- Uniformly high precision throughout the clamping range
- Accepts variations on bar \emptyset
- Enables clamping of hex, square, threaded profiles, etc., without positioning
- Avoids marking the bar or part
- Uniform, high-force grip
- Avoids penetration of chips into the bore
- Ideal for medical screws, constant pressure on the thread even in case of variations of tolerance.
- Carbide bore on request.

Wibemo - Croco collets

Steel Croco - Technical Data



| Item No | Type | EC Norm | A | B | C | E | F | α° |
|--------------------|----------|---------|-------|-------|--------|-------|-------|----------------|
| Steel Croco | | | | | | | | |
| 600-577-Ø | F8/577 | 101E | 8.00 | 12.00 | 42.00 | 4.50 | 8.00 | 16° |
| 600-86-Ø | F10/86 | 109E | 10.00 | 15.50 | 47.50 | 5.50 | 10.00 | 20° |
| 600-78-Ø | F12/78 | 1155E | 12.00 | 18.10 | 44.50 | 4.30 | 12.00 | 15° |
| 600-357-Ø | F13/357 | 116E | 13.00 | 19.00 | 64.00 | 6.00 | 13.00 | 16° |
| 600-98-Ø | F14/98 | 117E | 14.00 | 18.00 | 46.00 | 4.00 | 14.00 | 13° |
| 600-358-Ø | F15/358 | 121E | 15.00 | 22.00 | 47.00 | 5.00 | 15.00 | 20° |
| 600-580-Ø | F15/580 | 120E | 15.00 | 21.00 | 64.00 | 6.00 | 15.00 | 16° |
| 600-104-Ø | F16/104 | 123E | 16.00 | 22.00 | 55.00 | 5.00 | 16.00 | 15° |
| 600-830-Ø | F16/830 | | 16.00 | 21.00 | 66.00 | 8.00 | 16.00 | 16° |
| 600-1076-Ø | F16/1076 | 1212E | 16.00 | 21.00 | 64.00 | 6.00 | 16.00 | 16° |
| 600-87-Ø | F20/87 | 138E | 20.00 | 28.00 | 67.00 | 7.00 | 21.00 | 16° |
| 600-201-Ø | F20/201 | 136E | 20.00 | 26.00 | 54.00 | 5.00 | 19.00 | 15° |
| 600-71-Ø | F22/71 | 140E | 22.00 | 30.00 | 55.00 | 6.00 | 21.00 | 15° |
| 600-64-Ø | F25/64 | 145E | 25.00 | 35.00 | 77.00 | 10.00 | 27.00 | 16° |
| 600-93-Ø | F28/93 | 148E | 28.00 | 38.00 | 70.00 | 7.00 | 28.00 | 15° |
| 600-63-Ø | F30/63 | 157E | 30.00 | 42.00 | 80.00 | 10.00 | 34.00 | 16° |
| 600-101-Ø | F30/101 | 1446E | 30.00 | 38.00 | 65.00 | 6.00 | 32.00 | 15° |
| 600-221-Ø | F32/221 | 161E | 32.00 | 45.00 | 75.00 | 8.00 | 34.00 | 15° |
| 600-94-Ø | F35/94 | 163E | 35.00 | 48.00 | 80.00 | 8.00 | 38.00 | 15° |
| 600-740-Ø | F37/740 | 1536E | 37.00 | 47.00 | 92.00 | 10.00 | 40.00 | 16° |
| 600-72-Ø | F38/72 | 164E | 38.08 | 49.00 | 107.50 | 9.00 | 38.00 | 15° |
| 600-99-Ø | F42/99 | 171E | 42.00 | 55.00 | 94.00 | 9.00 | 42.00 | 15° |
| 600-81-Ø | F48/81 | 173E | 48.00 | 60.00 | 94.00 | 9.00 | 50.00 | 15° |

Wibemo - Croco collets

Steel Croco collet with long nose

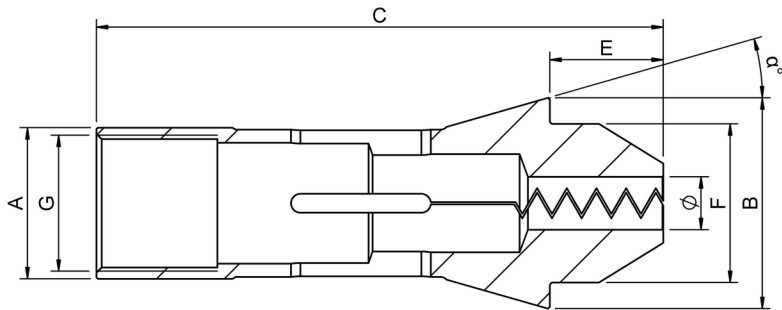


Advantages :

- Clamping range to 0.2 mm down
- Uniformly high precision throughout the clamping range
- Accepts variations on bar \varnothing
- Enables clamping of hex, square, threaded profiles, etc., without positioning
- Avoids marking the bar or part
- Uniform, high-force grip
- Avoids penetration of chips into the bore
- Ideal for medical screws, constant pressure on the thread even in case of variations of tolerance.
- Carbide bore on request.

Wibemo - Croco collets

Steel Croco collet with long nose - Technical Data



| Item No | Type | EC Norm | A | B | C | E | F | G | α° |
|-----------------------------------|-----------------|---------|-------|-------|--------|-------|-------|----------|----------------|
| Steel Croco with long nose | | | | | | | | | |
| 600-577-10-Ø | F8/577 (LN10) | 101E | 8.00 | 12.00 | 47.50 | 10.00 | 8.00 | M6x0.50 | 16° |
| 600-86-10-Ø | F10/86 (LN10) | 109E | 10.00 | 15.50 | 52.00 | 10.00 | 10.00 | M8x0.50 | 20° |
| 600-357-12-Ø | F13/357 (LN12) | 116E | 13.00 | 19.00 | 70.00 | 12.00 | 13.00 | M11x0.75 | 16° |
| 600-580-13-Ø | F15/580 (LN13) | 120E | 15.00 | 21.00 | 71.00 | 13.00 | 15.00 | M12x0.75 | 16° |
| 600-1076-13-Ø | F16/1076 (LN13) | 1212E | 16.00 | 21.00 | 71.00 | 13.00 | 16.00 | M14x0.75 | 16° |
| 600-87-15-Ø | F20/87 (LN15) | 138E | 20.00 | 28.00 | 75.00 | 15.00 | 21.00 | M18x1 | 16° |
| 600-87-20-Ø | F20/87 (LN20) | 138E | 20.00 | 28.00 | 80.00 | 20.00 | 21.00 | M18x1 | 16° |
| 600-201-13-Ø | F20/201 (LN13) | 136E | 20.00 | 26.00 | 62.00 | 13.00 | 19.00 | M18x1 | 15° |
| 600-71-18-Ø | F22/71 (LN18) | 140E | 22.00 | 30.00 | 67.00 | 18.00 | 21.00 | M20x1 | 15° |
| 600-64-18-Ø | F25/64 (LN18) | 145E | 25.00 | 35.00 | 85.00 | 18.00 | 27.00 | M22x1 | 16° |
| 600-101-20-Ø | F30/101 (LN20) | 1446E | 30.00 | 38.00 | 79.00 | 20.00 | 32.00 | - | 15° |
| 600-94-27-Ø | F35/94 (LN27) | 163E | 35.00 | 48.00 | 99.00 | 27.00 | 38.00 | - | 15° |
| 600-2013-27-Ø | F35/2013 (LN27) | | 35.00 | 43.00 | 90.00 | 27.00 | 34.00 | - | 15° |
| 600-740-25-Ø | F37/740 (LN25) | 1536E | 37.00 | 47.00 | 107.00 | 25.00 | 40.00 | - | 16° |
| 600-81-28-Ø | F48/81 (LN28) | 173E | 48.00 | 60.00 | 113.00 | 28.00 | 50.00 | - | 15° |